

## Trumpet in B♭ 2

# Classic Games Medley

arr. J. Morley-Smith

## "Super Mario Theme"

A

$\text{♩} = 200$

## Rubato

The musical score for 'The Rose Tree' is written for a single melodic line on a treble clef staff. The key signature is one sharp (F#), and the time signature is 2/2. The melody begins with a whole rest, followed by a half note G4 (marked *mf*), a half note A4 (marked *f*), and a half note B4. The tempo is marked 'Allegretto'. The score continues with a series of eighth and quarter notes, including a triplet of eighth notes (G4, A4, B4) and a final half note G4. The piece concludes with a double bar line.

6

12

17

B

cup mute

22

26

C

senza sord.

[illegible]

31

**rall.** \_ \_ \_ \_ \_

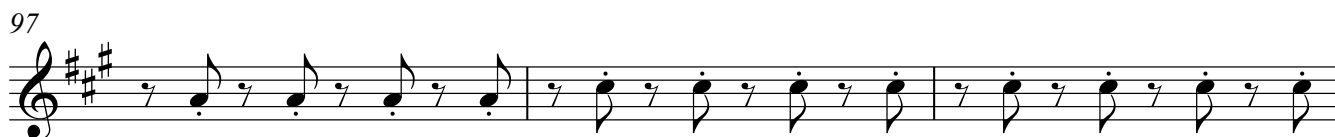
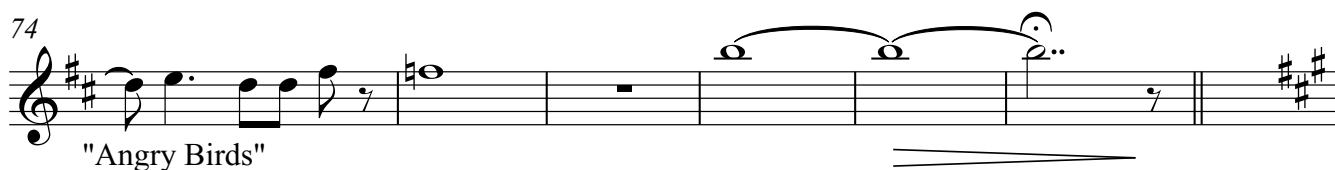
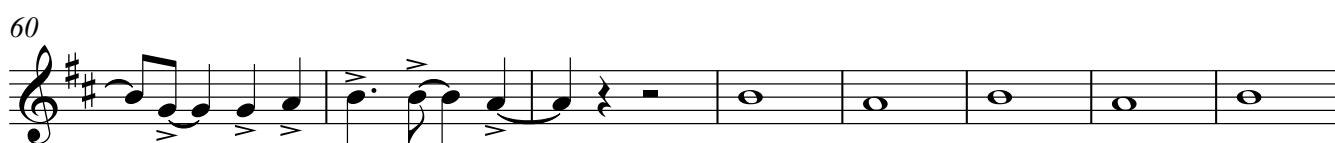
## "The Legend Of Zelda - Ocarina of Time"

**D**

$\text{♩} = 82$

35

6

accel.  $\text{..}$ 

♩ = 100

100

**"Mario Bros Underworld Theme"**

104

**H**

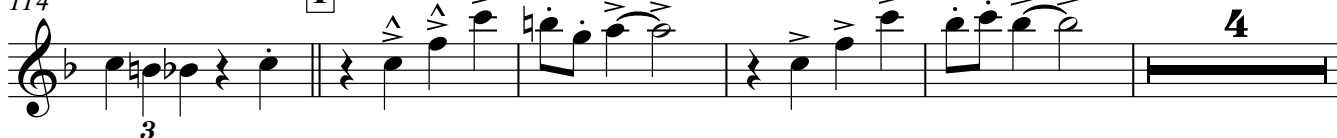
110

**"Super Mario Galaxy Theme"**

114

**I**

♩ = 120



123

**J**

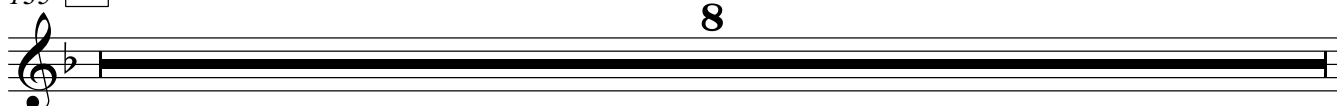
127



131

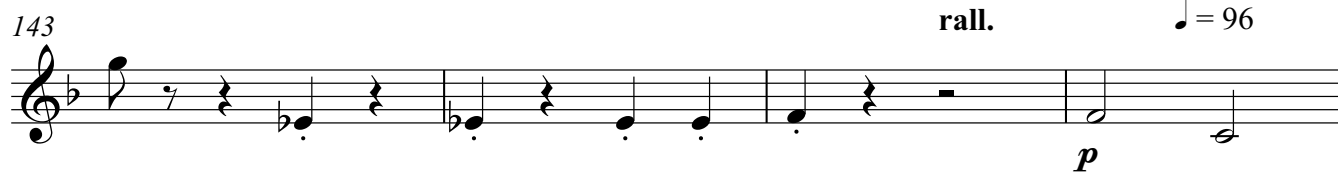


135

**K**

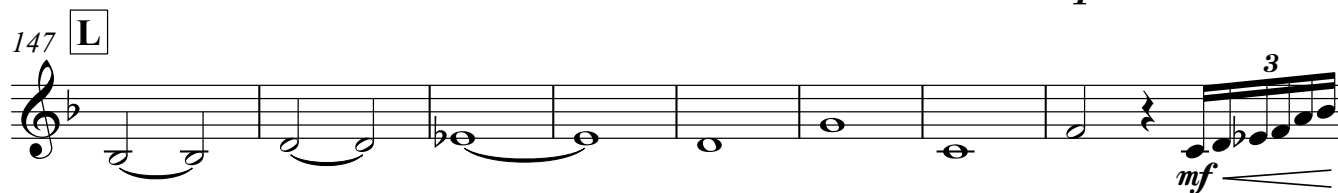
8

143 **rall.** ♩ = 96



*p*

147 **L**



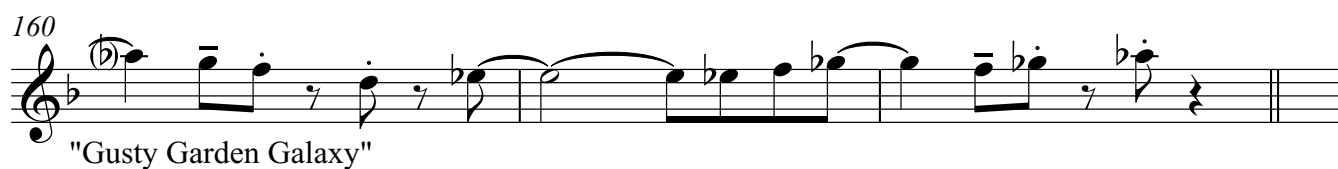
*mf*

155



*f*

160



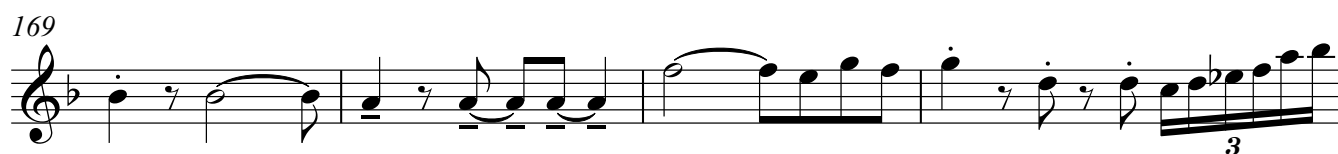
"Gusty Garden Galaxy"

163 **M** ♩ = 136



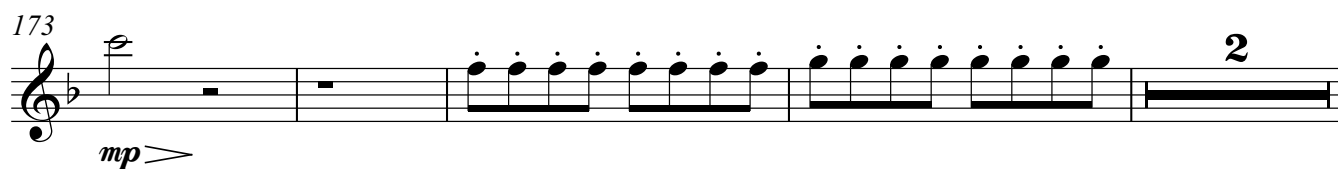
*mp*

169



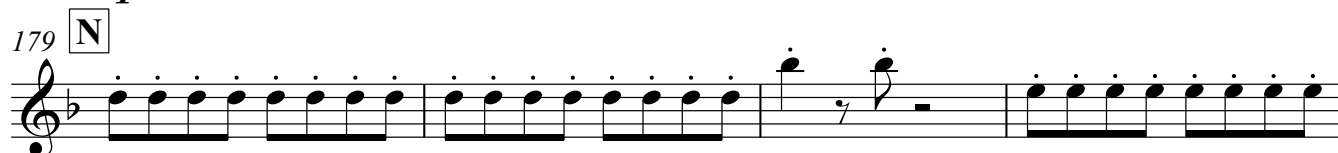
*mp*

173



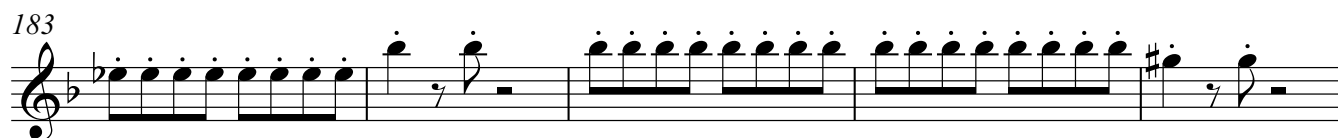
*mp*

179 **N**



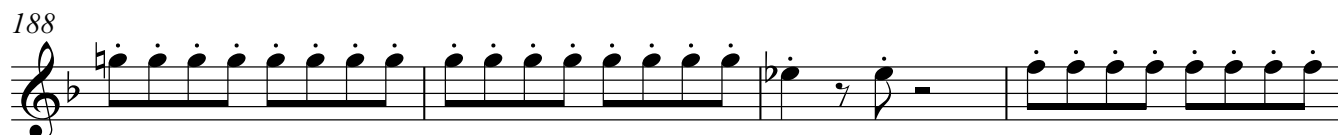
*mp*

183



*mp*

188



*mp*

## "Super Mario Galaxy Theme - Reprise"

192 O ♩ = 136

200 *ff* *p*

205

209 P *f*

215

219